

RUTLAND HISTORICAL SOCIETY *Newsletter*

Vol. II No. 1

FALL 1971



HOWE'S CANDY SHOP — @ 1912. Many an early 20th Century Rutland resident can remember the cooling refreshment of a cold drink or Howe's Ice Cream served by the smiling faces at Howe's Candy Shop, which later became Howe's Coffee Shop at 21 Center Street. In case you've forgotten the above faces, they are (left to right) Helen Koltonski, Mary Gomez Katherine Bushell, Mrs. H. H. Howe, Idell Donahue and Maude Newell.

ATTENTION: Anyone knowing the whereabouts of any portrait or engraving of Israel Smith, Fourth Governor of Vermont, U. S. Senator and U. S. Representative, is requested to immediately notify the Editor of the *Newsletter*. The only known image available is a silhouette.

*“Balloons and candy and the many toys
They were all part of yesterday’s joys.
Remember? ”*



*“Dolls were different then”—Items from
The Enchanted Doll House collection of Mrs.
Jean Schramm.*

Mrs. Jean Schramm, proprietress of the Enchanted Doll House in Manchester Center, Vermont, entertained the Rutland Historical Society and their guests at the Third Annual Business Meeting of the Society on November 17 with vivid memories from the world of toys. Mrs. Schramm showed and talked about an entrancing selection of old dolls, toys, games and all those things so dear to childhood days of the past. For one doll, over a hundred years old, Mrs. Schramm had a documented history. The program concluded with a number of interesting “show and tell” items brought by the audience.

MUSEUM

The hope of the Rutland Historical Society to have a museum in which to collect and exhibit items of interest has come one step nearer with the decision by the Rutland Board of Aldermen to purchase the Seventh-Day Adventist Church building at 101 Center Street.

This building, which served as a bank over 120 years ago, has been a church for about the last 70 years. Although modest in size, the building is centrally located with a view on Main Street Park.

The Rutland Historical Society tentatively plans to occupy this building in the summer of 1972, when the Seventh-Day Adventist Church will move to a new church building now under construction.

PRESIDENT'S COLUMN

It has been traditional for the President of the Rutland Historical Society to report to the membership on the past year's activities and activities planned for the next year. This year it is a pleasure to record that a museum and a home for the Society is nearly a reality. It is hoped that the 1972 Annual Meeting will be held in the new museum.

Although this year is one in which to rejoice in the successful search for housing, the old cliché that "a house is not a home" might well be translated to "a building is not a museum." Rather than signalling an end to the search for a museum, the available building only marks the beginning of the development of a museum. And this development will require much work and much creativity. No longer will membership dues and interest in the Society's activities suffice.

Museums have changed in the last few years. (At least the good ones have.) No longer are historical artifacts simply displayed forever and ever. Exhibits have to change or else a museum becomes "a place you visited once." The new museum emphasizes the use of multi-media such as lights, sound, movement, etc. It would seem very apparent that planning for a new museum will involve a great deal of homework from involved members to develop a concept of a good museum. And then there still remains the execution. There is a great opportunity for creative workers. Any takers?

OFFICERS FOR 1971-72

The slate of officers nominated by the Nomination Committee of The Rutland Historical Society was approved by the members of the the Society at the Annual Business Meeting.

The officers and directors of the Society, who form the Board of Directors, are:

Officers: President: James S. Davidson
Vice President: Louise Adams
Secretary: Olga Ruppe
Treasurer: Napoleon Lamar

Directors for two years:
F. Robert Robinson
Anna McDevitt
Arch Todd

Directors serving the second year of a previous term:
Fred Elwert
Judge Milford K. Smith
Bennett Bell

At a recent directors' meeting, Fred Elwert was re-elected Chairman of the Board of Directors.

WHO'S WHO

Mrs. Alton Swan of 5 Crown St. is a genealogist who specializes in Rutland County and has contributed much help to those searching for knowledge of Rutland's history. She is a member of the New England Historical and Genealogical Society and is very active in the Vermont Daughters of the American Revolution. She has produced invaluable typescript copies of the East Parish and the West Parish Congregational Church records from their beginnings in the late 18th Century to the mid-19th Century. These are available to the public in the Vermont Historical Society Library in Volume 23 of *Vermont State D.A.R. Genealogical Records Committee Compilings* and represent hundreds of pages of baptismal, marriage, and death records, as well as church admissions and dismissals. Mrs. Swan is a member of the Rutland Historical Society and the Vermont Historical Society and is Church Archives Chairman of the Grace Congregational United Church of Christ.

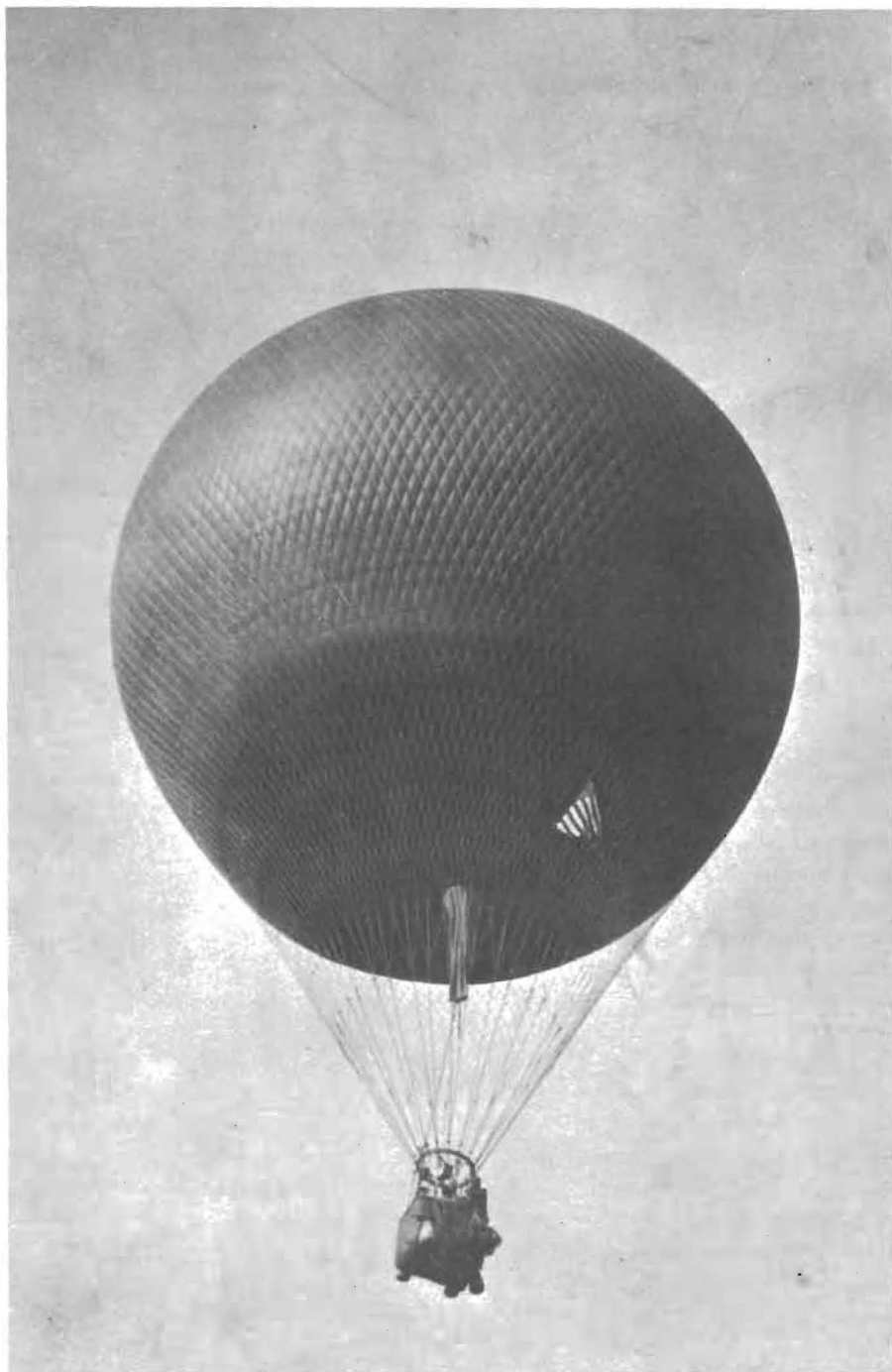
Norman E. Favor of 28 Lafayette St. has lived in Rutland for 36 years. He has been active in Rutland County surveying for over 20 years. During this time he has been particularly interested in the location and architecture of historic sites in Rutland County, especially in Rutland City. Thus the geography and physical dimensions of the Rutland area are well-known by him. He has done numerous maps and illustrations in the area, among which are the illustrations and numerous maps in Joseph L. Wheeler's *The Mt. Independence-Hubardton 1776 Military Road* and the text and map in the Rutland Historical Society's "A Walking Tour of old Rutland's Main Street." Norman has broad interests in most Americana items.

What's Where

A brochure entitled "A Walking Tour of old Rutland's Main Street" has been published by the Rutland Historical Society and is available free at the Chamber of Commerce Travel Information Booth or from the Rutland Historical Society. The brochure contains text and a map by Norman E. Favor.

WHO KNOWS

the whereabouts of a site suitable for a summer archeological dig in the immediate Rutland area? The Rutland Historical Society's plans to promote an archeological workshop and dig in Rutland were postponed until next summer due to the lack of a suitable site. Anyone with suggestions regarding a colonial or Revolutionary site should contact Judge Milford K. Smith, 88 Church St.



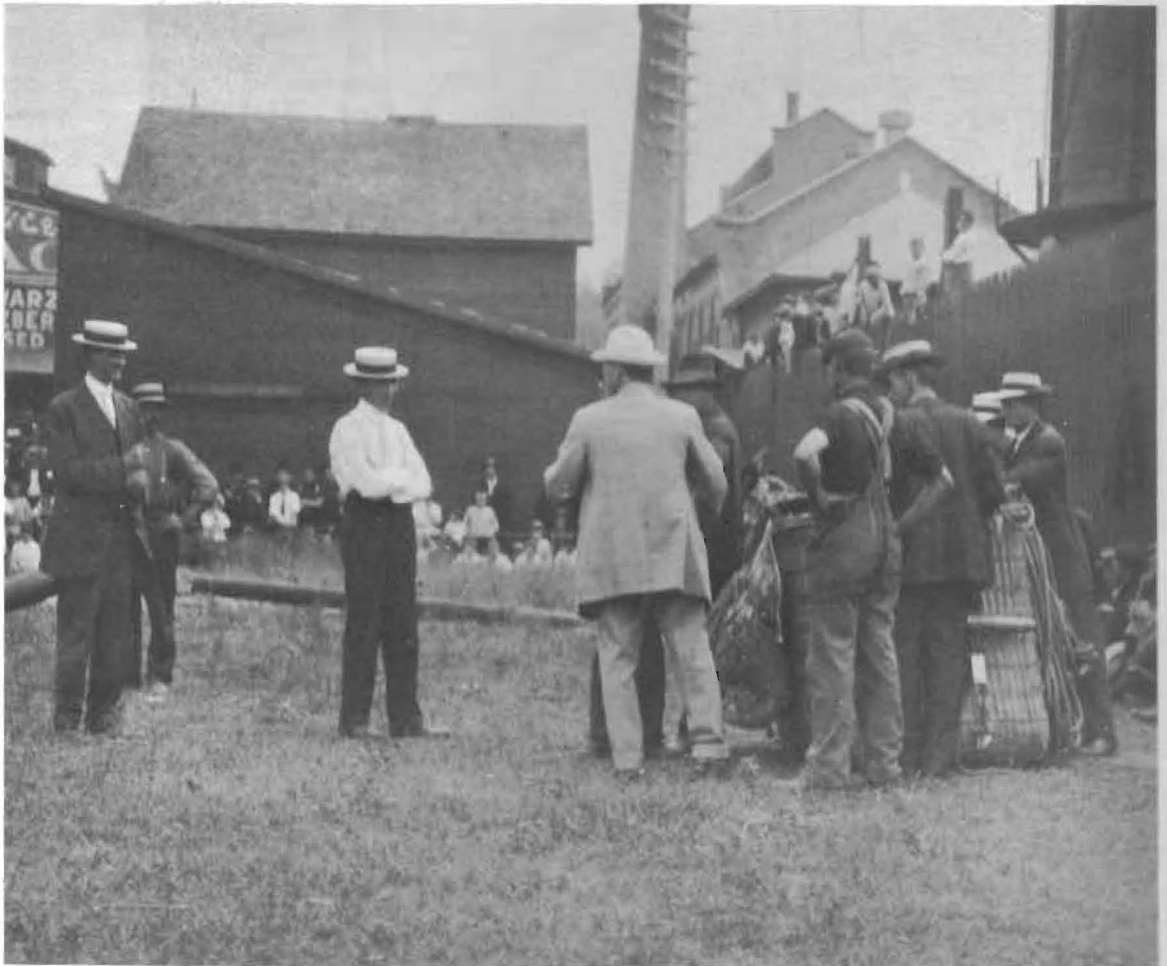
Away they go—F. M. Wilson on the way to Barnard, Vermont @ 1907. A Mr. West, who also made the trip, commented that he liked the ride fine, but the creak of the basket he didn't like so well.

RUTLAND HISTORICAL SOCIETY ON TV

Norman E. Favor was a guest on Channel 12, Rutland's cable TV channel, on the TUESDAY AT TEN program on November 2. Norman's talk about old Rutland highlighted the Main Street Park area, which is the subject of the "Walking Tour of old Rutland's Main Street," a brochure recently published by the Rutland Historical Society.

After presenting a brief history of the early settlement of Rutland, Norman showed several pictures of old Rutland buildings and scenes.

RUTLAND TO BARNARD, VERMONT



Flight preparations—F. M. Wilson prepares to fly from Rutland to Barnard, Vermont @ 1907. Will Lamson is identified in the left foreground.

The Rutland Historical Society is interested in the collection, preservation, and exhibition of all sorts of materials relating to the history of old Rutland, which includes Rutland City, Rutland Town, West Rutland and Proctor. At this time the Society is especially interested in old pictures (including postcards, snapshots and movie film), paintings, maps (printed and manuscript), letters, diaries, notebooks, scrapbooks, account books, business records, books, city directories, etc. Please note that all gifts are tax deductible as the Rutland Historical Society is recognized by the U. S. Internal Revenue Service as a non-profit organization. The society will be glad to have a representative call at your home if you feel that you have something of historical value or interest. Upon the occupation of our new museum building, the Society will be able to accept larger items. The Society is also willing to make copies of items that you may wish to keep.

Telephone 773-7525 or 773-9214 for further information.

MEMBERSHIP

Individual membership in the Rutland Historical Society is open to anyone interested in the purpose of the Society upon payment of the \$2.00 annual membership fee. The Society's year runs from October 1st to September 30th; however new memberships after June 30th are applicable to the next full year. Old members are reminded that dues are now payable. If you are downtown, Carleton Wilson at Wilson's Clothing Store will be glad to receive your membership dues.

If you have friends who would like to receive the *Newsletter*, all we need is the full name, address and zip code.

RECENT DEATHS

We regret to note the passing of John Clark, a member of the Rutland Historical Society.

Picture Credits:

HOWES CANDY SHOP, Carleton Wilson (Identification by Helen Koltonski)

DOLLS, Mrs. Jean Schramm

BALLOON PICTURES, Carleton Wilson

CHINESE LAUNDRY, Mrs. Barbara B. Chiolino (Information by Tom Ying)



The Sang Lung Chinese Laundry—This laundry was located at 61 Center St. at least as early as 1887. For years, members of the Chinese community in Rutland owned and operated the laundry. The grandfather of Tom Ying, proprietor of the Kong Chow Chinese Restaurant at 48 Center St., owned and operated the laundry around the turn of the century.

**RUTLAND HISTORICAL SOCIETY, INC.
POST OFFICE BOX 254
RUTLAND, VERMONT 05701**

**Newsletter
Volume II, Number 1
Fall 1971**